

GASPARDO



BOOMS RANGE

Mounted sprayers / Trailed sprayers

RANGE OF BOOMS

“The attention and care we put into our equipment are synonymous with quality and professionalism”

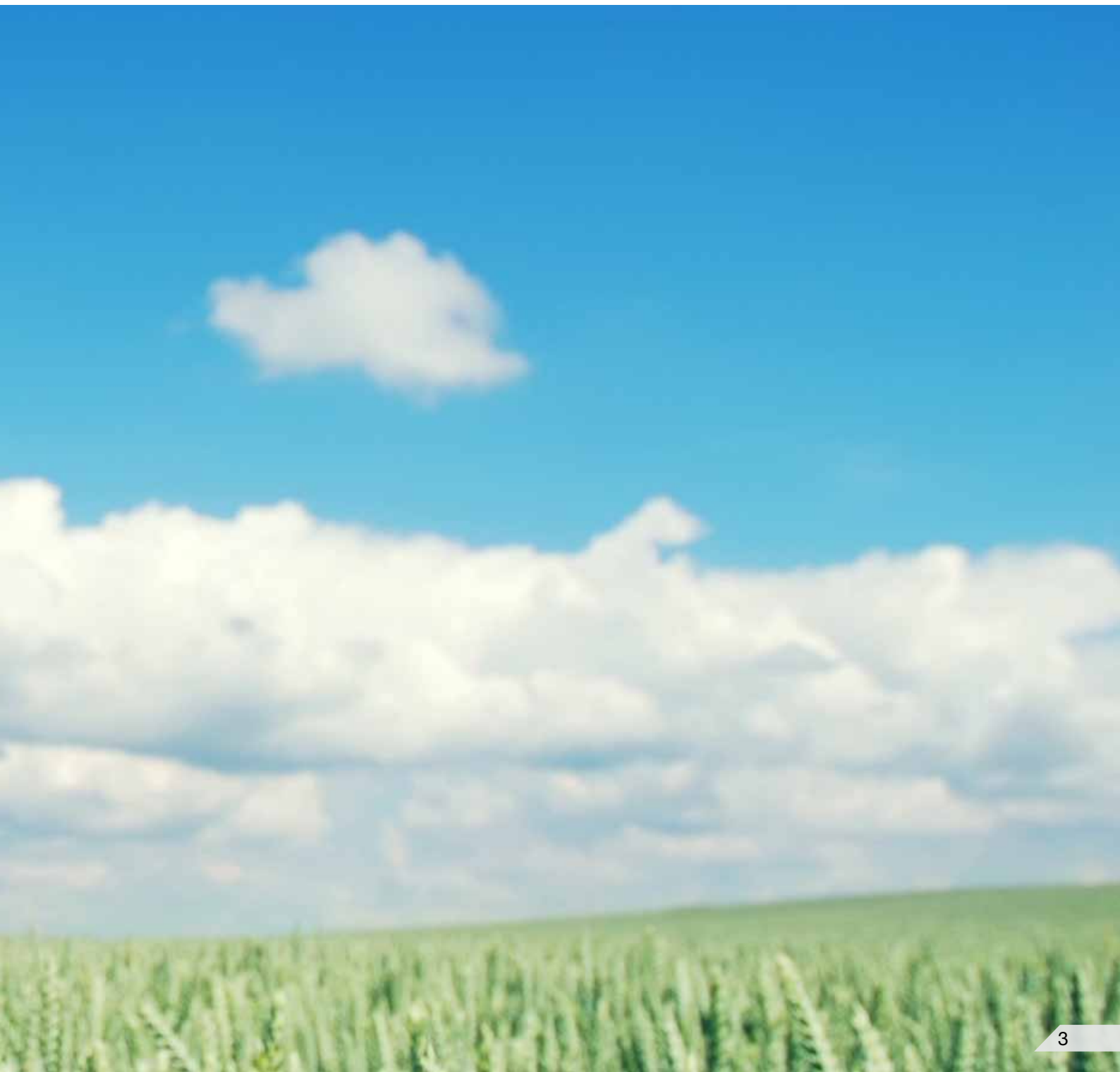
Gaspardo Sprayer technical office



Sensitivity to your needs is what inspires us to constantly innovate our products, to reach new goals together.

INDEX

Booms for mounted sprayers	
Versions	4
Work X	5
Easy U	6
Work U	7
Booms for trailed sprayers	
Versions	8
ALA C	9
ALA 500	10
ALA 600	11
ALA 700	12
ALA 900	13
Accessories and customisations	
Nozzles	14
Airboom	15



Booms for mounted sprayers



Booms for mounted sprayers with hydraulic movement

The range of mounted sprayers has 3 versions of booms with hydraulic movement. Built with high constructive quality and sophisticated technical solutions to ensure a practical and easy to use tool for crop management. All 3 versions are equipped with vertical closure in the last section, which makes it easier to work in small spaces, moving with agility between field borders and electricity pylons. In detail, the boom versions consist of: WORK X: «Compact» version with X closure, simple and practical, with two sizes available, 12 and 15 metres; EASY U: «Comfort» version with folding closure and vertical closing ends, available in 15, 16 and 18 metres; WORK U: «Professional» version with folding closure and independent closing ends, comes with plenty of standard equipment, available in 15, 16 and 18 metres;



TECHNICAL INFORMATION		WORK X	EASY U	WORK U
Dimensions	metres	12-15	15-16-18	15-16-18
Last section	Opening-closing	vertical	vertical	vertical
Boom Sections	No.	5	7	7
Water Sections	No.	5	5-7	5-7
Available Models	Capacity (Lt)	COMBINATIONS		
TEKO	600÷1200	x	x	x
TEMPO	860÷1298	x	x	x
TEMPO ONE	1200÷1880	x	x	x
CAMPO 15-20 C (trailed)	1700-2100	x	x	-



WORK X

Simple and practical, the ideal choice for small companies

The Work X boom has been designed to meet the needs of the small-medium sized farmer. It is a practical and compact tool, which facilitates crop defence operations. The WORK boom has booms with independent closure via 2 cylinders, cataphoretic coating and self-levelling with automatic lock. The 1000mm handler can be fitted with a hydropneumatic shock absorbing system and tilt regulator as standard, measurements available: 15, 16 and 18 metres.

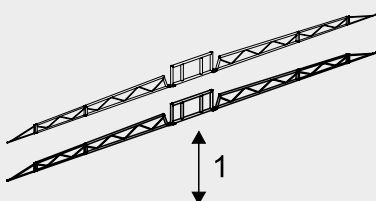


Robust

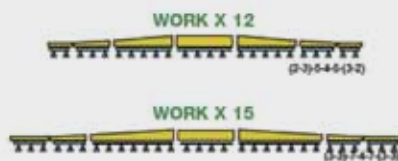
The solid structure and protected water sections inside the frame ensure optimal reliability over time. The last section has a safety hinge.



WORK X		X12	X15
Working width	cm	12	15
Model available		Teko - Tempo - Campo 15-20 C	
Boom cylinders	No.	2	
1000 mm vertical lifting	type	manual (std) hydraulic (opt)	
Tilt regulator	type	optional	
Weight	Kg	211	260



Cart lifting from 1000 mm



WORK X water sections



WORK X movements



EASY U

Compact and light, as well as intuitive in its operation, EASY U rises to the occasion even in the most professional uses.

The EASY U boom combines the concepts of construction simplicity and ease of use. The 3-sectioned opening, of which the last section is vertical, is managed by just 2 hydraulic cylinders, which permit sequential opening. Both booms can be opened/closed simultaneously or on one side at a time. The structure is made of quality steel, which ensures maximum strength. Equipped with automatic self-levelling, tilt regulator and 1000mm of vertical lifting.

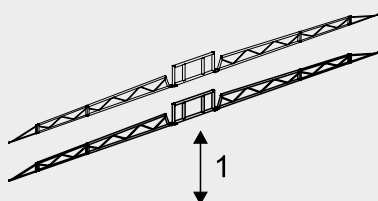


No more weeds

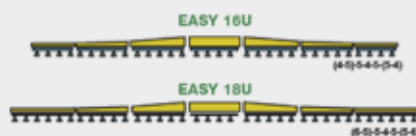
Easy U merges the concepts of lightness and performance for a winning combination in the defence of your crops.



EASY U		EU16	EU18
Working width	cm	16	18
Model available		Teko - Tempo - Campo 15-20 C	
Boom cylinders	No.	4	
Self-levelling	type	standard	
1000 mm vertical lifting	type	hydraulic	
Tilt regulator	type	mechanical - Hydraulic (opt)	
Weight	Kg	350	410



**Cart lifting
from 1000 mm**



EASY U water section



EASY U moving



WORK U

Freedom of operation and excellent equipment for maximum professionalism.

Work U is at the top of the range of Gaspardo mounted booms, offering double layer cataphoretic coating, self-levelling with automatic lock, the tilt regulator and hydraulic lifting as standard. Designed with independent control of the single sections, it allows treatment of even the narrowest plots of land with maximum ease. The Work 18 U version makes it possible to work at 12 metres, by closing the outer tips. Now also ISOBUS.

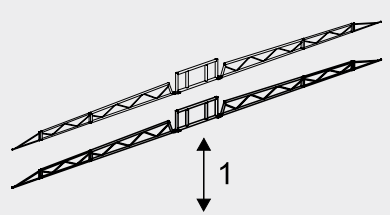


Independent sections

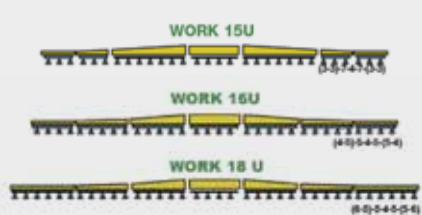
With Work U, you can manage every single movement of the boom, with complete freedom of control.



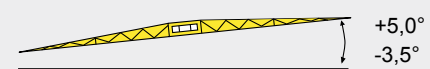
WORK U		U15	U16	U18
Working width	cm	15	16	18
Model available		Teko - Tempo -Tempo one		
Boom cylinders	No.	4		
Self-levelling	type	standard		
1000 mm vertical lifting	type	hydraulic		
Tilt regulator	type	mechanical - Hydraulic (opt)		
Weight	Kg	350	380	450



Cart lifting from 1000 mm



WORK U water section



WORK U movements

Booms for trailed sprayers



The ALA boom range is always offering you the product most suited to your needs.

Developed according to the concepts of quality and performance, the models of the ALA range represent a professional and reliable product for crop defence.

Continuous innovation through research and development

All the models of the ALA range are made with top quality material and advanced solutions, which have enabled us to make improvements towards the following goals:

- **frame stability for improved treatment homogeneity**
- **increased work speed thanks to the new shock absorbing self-levellers**
- **optimal adaptation to uneven ground**
- **increased resistance to atmospheric and chemical corrosion**
- **increased resistance to fatigue and longer duration over time**
- **drift reduction**

New frame geometry and boom design for improved stability and balance:

New design of booms ALA 500, ALA 600 (1) and ALA 900



TECHNICAL INFORMATION		ALA C	ALA 500	ALA 600	ALA 700	ALA 900
Dimensions	metres	16-18	18-19-21-22	18-19-20-21-22-23-24	24-27-28	27-28-30-32-33-36
Last section	Opening-closing	Vertical	Vertical	Lateral	Vertical	Vertical
Water Sections	No.	5-7	5-7-9	5-7-9	7-9-11	9-11-13
Available Models	Capacity (Lt)	COMBINATIONS				
CAMPO 15-20 C	1700-2100	X	X (Up to 21 m)	X (Up to 21 m)	-	-
CAMPO 22-32 C	2200-3200	-	X	X	-	-
CAMPO 22-32P	2200-3200	-	X	X	X	-
CAMPO 44-65	4500-6500	-	-	-	X	X



New materials for improved lightness and flexibility

- Use of Domex high resistance steel in the boom and coupling points
- ALA 900 with the last section in aluminium

Models ALA500-600 can incorporate the VENTO series air hose.



Changes to the structure for improved rigidity

- Variable geometry with direct connection between the frame and the central unit (a)
- New hinges in sections ALA 500 (b), ALA600 (c) and ALA 900 (d)



(a)



(b)



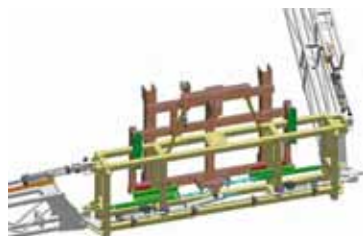
(c)



(d)

Changes to the central unit for improved reactivity and reliability

- Adjustable hydraulic self-levelling with isometric tie rods to reduce lateral movement (4)
- Hydraulic dual spring shock absorbing self-levelling (5)
- Booms cushioned both horizontally (6) and vertically (7), hanging with mechanical ties (A) or hydraulic ties (variable geometry) (B).



ALA 500 & 600



ALA 700



ALA 900

ALA C



The ALA family's first model for trailed sprayers, ALA C offers side boom closure along the sides of the tank and the available work widths of 16 and 18 metres. The last boom section, which can be folded vertically, makes it possible to easily overcome obstacles along the field. Simple to use and compact for transport, it can be combined perfectly with the CAMPO 15-20 C model (1700 and 2100 litre tank) for tractors with medium-small power (60-90 HP).

Light in form, effective in results



Simple and intuitive

The movement of the hydraulic sections (central and opening/closing of booms) can be managed direction by the tractor's 3 hydraulic distributors. For better comfort and ergonomics, the OIL-DRIVE control unit is available, which allows movement through a PTO-activated auxiliary pump.

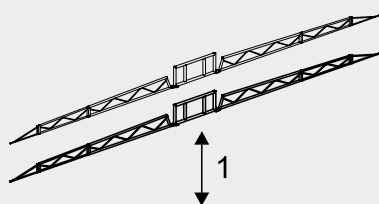


Compact but professional!

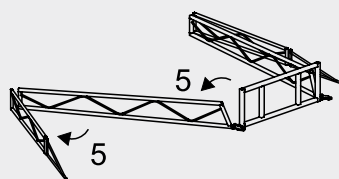
The boom's structure is designed to protect the water sections up to the end, for greater safety in case of accidental bumps. Equipped, as standard, with uni-jet nozzles with filter and integrated anti-drop system, for precise and controlled spraying.



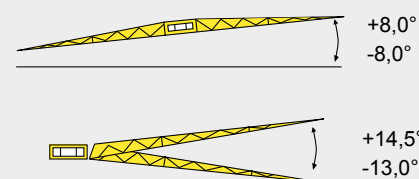
ALA C		C16	C18
Working width	m	16	18
Model available		Campo 15 - 20 C	
Water Sections		5-7	
Opening movements	n	2	
Boom cylinders		4	
Last section closure		Vertical	
Cart lifting	mm	1000 -1400	
Shock absorbing self-levelling		mechanical	
Tilt regulator		-	
Single boom shock absorber		mechanical	
Variable geometry		-	
Air hose		-	



**Cart lifting
from 1000 mm**



ALA C opening



ALA C movement



ALA C central unit



**Hydropneumatic shock absorber
(optional)**

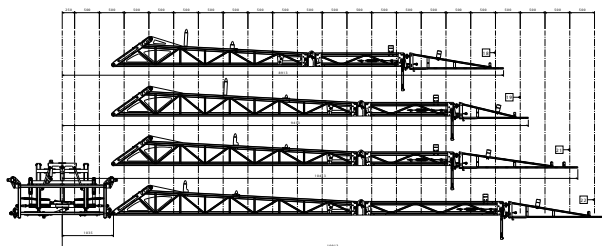


**Control unit for management of
hydraulic functions (OILDRIVE)**

ALA 500 and 600

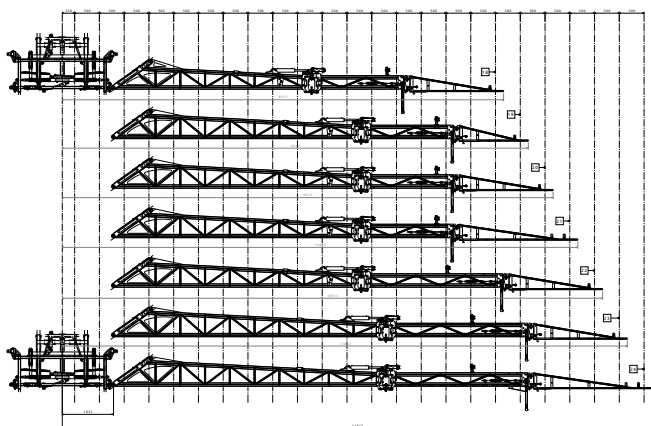


The ALA500-600 series have been created in compliance with the most recent European regulations in the sector, with the goal of increasing the quality technical contents and, as a result, the results on the field. The design provides modularity and interchangeability of the components, which produce a wide range of measures and layouts with the aim of better meeting diverse needs. In addition to self-levelling with shock absorption, there is a balance regulator for general boom tilt, which can be matched with variable geometry for independent management of the single booms. We have given particular attention to the choice and development of the OILDRIVE hydraulic system, powered directly by the dual-effect hydraulic connector of the tractor with an independent hydraulic pump.



ALA 500

The last boom has overlapped closure in order to easily overcome obstacles present even before the safety joint. In addition, the VENTO boom allows operation of the hose, even with the tips closed. One single electro-hydraulic command permits the sequential opening of each side of the boom.



ALA 600

The last boom closes laterally (folding). One single electro-hydraulic command permits the sequential opening of each side of the boom. In the case of the air hose, the command is simultaneous; the two booms open simultaneously on the same side.



Cart lifting

- Campo 15-20 C 1000 mm lifting
- Campo 22-32 C 1400 mm lifting
- Spring shock absorption (Std), hydropneumatic (opt)
- ALA 500 and 600 versions up to 21 mt



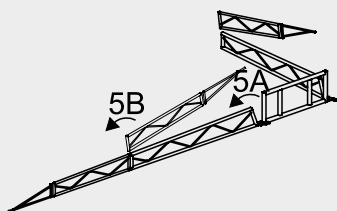
Parallelogram lifting

- 1500 mm vertical travel
- Hydropneumatic shock absorption (std)
- All ALA 500 and 600 versions

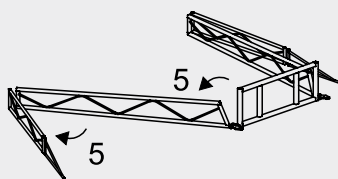


Performance and versatility for everyone

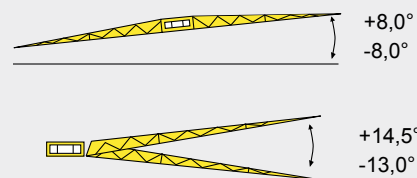
ALA 500 & ALA 600		518	519	521	522	618	619	620	621	622	623	624
Working width	m	18	19	21	22	18	19	20	21	22	23	24
Model available	version	Campo 15-20C - Campo 22-32C - Campo 22-32P										
Water Sections	No.	5-7 -Single nozzle (Seletron)				5-7 -9-Single nozzle (Seletron)						
Boom cylinders	type	6				6						
Last section closure		vertical				lateral						
Central lifting		Campo 15-20 C Cart 1000 mm - Campo 22-32 Cart 1400 mm - Campo 22-32 P Parallelogram 1500 mm										
Handler shock absorber		hydropneumatic				hydropneumatic						
Tilt regulator		hydraulic				hydraulic						
Single boom shock absorber		mechanical				mechanical						
Variable geometry	No.	hydraulic (opt)				hydraulic						
Air hose		available on request				available on request						



ALA 500 opening



ALA 600 opening



Movements



ALA 500 and ALA 600 central unit



Oil-drive located inside the central unit



Hydraulic boom tilt



Variable geometry

ALA 700



The ALA700 series offers a robust frame and a geometry that ensures optimal boom stability and rigidity. Specially developed for the parallelogram lifter, the central unit is equipped with a double-jointed pendulum self-leveller on bearings, which eliminates the lateral movements of the boom for improved working comfort. The booms with folding side closure and variable geometry with hydropneumatic shock absorbers also allow precise management of hilly terrains and valleys. For greater comfort and simplicity of use, the booms open in sequence, allowing simultaneous management of both sides. Available for versions Campo P 32 and 32 S.

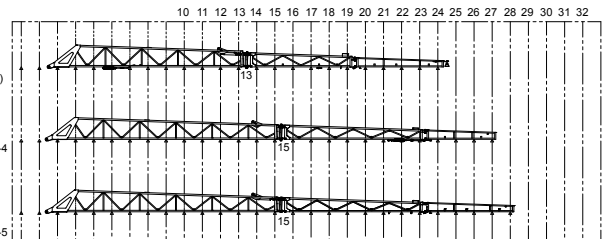
Reliability and performance for all work conditions



724
6002-0046P
11-11-4-11-11
5-8-9-8-9-6-5
5-8-4-5-8-5-4-6-5
5-8-8-6-8-8-5 (DE)

727
6002-0086F
*(12-13-4-13-12)
4-8-11-8-11-8-4
4-4-4-11-8-11-4-4-4
6-6-6-6-6-6-6-6

728
6002-0086F
*(13-13-4-13-13)
5-8-11-8-11-8-5
5-4-4-11-8-11-4-4-5



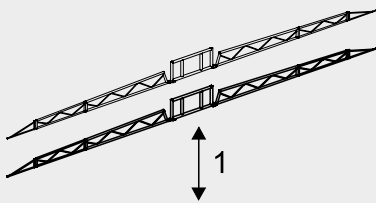
ALA 700
Measurements available: 24, 27 and 28 metres with the last section closing vertically.

ALA 700
The geometry of the frame is designed to ensure the maximum rigidity and stability of the structure.

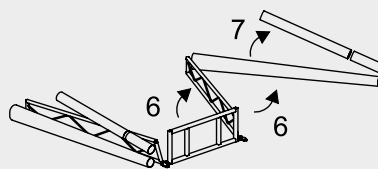




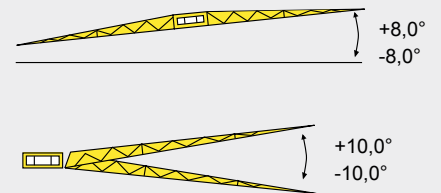
ALA 700		724	727	728
Working width	m	24	27	28
Model available	version	Campo 32 P - Campo 32 S*		
Water Sections	No.	5-7 -9-Single nozzle (Seletron)		
Boom cylinders	No.	8		
Last section closure	type	Vertical		
Central lifting	mm	1500		
Handler shock absorber		hydropneumatic		
Tilt regulator		hydraulic		
Single boom shock absorber		hydropneumatic		
Variable geometry		as standard		
Air hose	No.	-		



1500 mm parallelogram lifting



ALA 700 opening



ALA 700 movements



ALA 700 central unit



ALA opening jack with shock absorption system for side bumps



Hydraulic tilt regulator



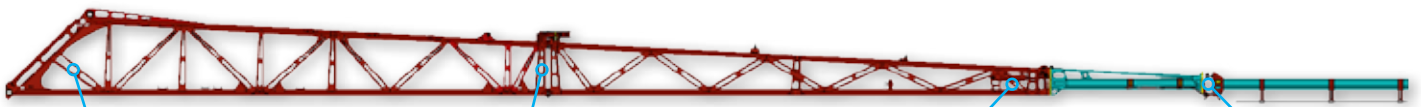
Nozzles protected inside the frame

ALA 900



Developed to meet the needs of large companies, new solutions have been introduced to the ALA 900 version with the aim of maximising the concepts of strength, rigidity, reactivity and lightness.

In addition to the boom's structural elements, the water circuit has also been revised, and as standard it now has a semi-continuous recirculation system and up to 13 dedicated water sections. The optimal balance of weights and the use of highly professional materials (Domex, aluminium) give the boom maximum reactivity and balance.



New frame design for increased strength



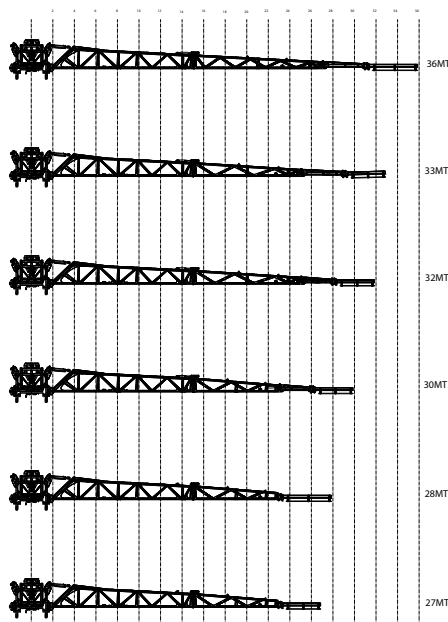
Closure of knee sections with safety lock



Closure of knee sections with safety lock

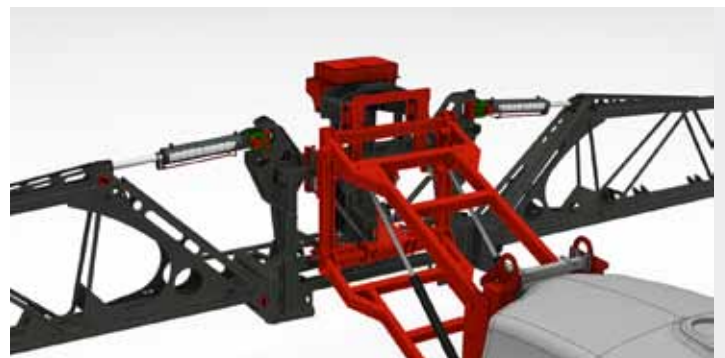


Safety joint of the last section at 360°



Increased performance

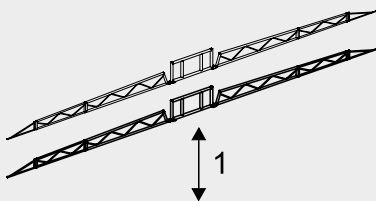
All the models of the ALA 900 range combine high operating capacity with optimal stability in the field, ensuring comfort and practicality in treatment management. During testing, the boom was tested up to a speed of 40 km/h, showing an excellent response even in extreme conditions.



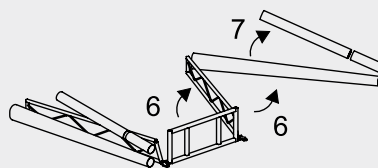


For large extensions

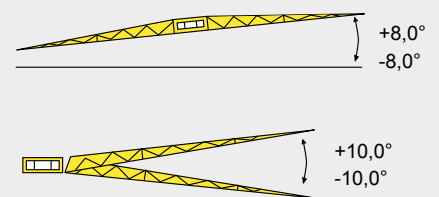
ALA 900		927	928	930	932	933	936
Working width	m	27	28	30	32	33	36
Model available	version	Campo 44 - Campo 65					
Water Sections	No.	9-11-13-Single nozzle (Seletron)					
Boom cylinders	No.	8					
Last section closure	type	Vertical					
Central lifting	mm	1500					
Handler shock absorber		hydropneumatic					
Tilt regulator		hydraulic					
Single boom shock absorber		hydropneumatic					
Variable geometry		as standard					
Air hose		-					



1500 mm parallelogram lifting



ALA 900 opening



ALA 900 movements



ALA 900 central unit



Axle with shock absorption (opt)



Compact structure of the frame and water sections



Last section with vertical closure

Airboom: your ally against drift

The VENTO air hose has been expressly designed for the ALA500-600 series in various measurements and comes with Ø800mm fans, hydraulically actuated by a pump multiplier unit, actuated by PTO, with cooling radiator, electric speed regulator and canvas conveyors for air distribution with tensioning system. For the ALA500 and 600 series, we chose a streamlined geometric configuration of liquid air flow, which ensures all users the best result possible, in terms of both leaf penetration and anti-drift. The operator has the sole task of modulating the speed of the air through the electric adjustment of fan speed, electrically adjusted from the cockpit.



Trijet and seletron for a 360° defence



Standard supplies

The supplied package with the ALA booms includes 3 nozzles, two XR and one TWINJET (anti-drift).



Maximum work versatility thanks to the Trijet system

The trijet system, which allows the application of 3 nozzles in the same distributor, makes it easy and quick to switch from one nozzle to another, in order to always have the correct configuration throughout the day. With the 360° rotation of the distributor, the desired jet can be set, all without coming into contact with the product, for higher work quality.



Pinpoint accuracy

So as to always ensure maximum precision, avoid possible overlapping and streamline the use of the product, the "SELETRON" system, which allows the electronic management of the single nozzle for the entire length of the boom, is available on the ALA 500 versions. By reading the GPS signal, a dedicated program automatically controls the single nozzles, closing or opening them in case of overlapping or distribution outside its work area.

GASPARDO

MASCHIO GASPARDO S.p.A.

Headquarters and production plant
Via Marcello, 73
I-35011 Campodarsego (PADOVA) - Italy
Tel. +39 049 9289810 - Fax +39 049 9289900
info@maschio.com - www.maschio.com

MASCHIO GASPARDO S.p.A.

Production plant
Via Mussons, 7
I-33075 Morsano al Tagliamento (PN) - Italy
Tel. +39 0434 695410 - Fax +39 0434 695425