

# GASPARDO

# PULL-TYPE SPRAYERS



## PULL-TYPE SPRAYERS RANGE

*The best productivity for crop protection*

# TRAILED SPRAYERS

## GASPARDO SPRAYERS, YOUR ALLY FOR HEALTHY CROPS !



Gaspardo has introduced a complete range of efficient and reliable mounted or trailed sprayers to meet the needs of all the farmers. Standard configuration with many rich features, top-quality components, attention to detail, and, first and foremost, user friendly design make this range of sprayer the best ally on the field for crop protection. Consideration for the environment and the user's health have been taken as priorities during the engineering of all the machines.

## TRAILED SPRAYERS RANGE

Gaspardo trailed sprayers can satisfy the requirements of the most demanding of farmers: from the vegetable grower who needs a relatively long-range machine with low soil compaction like SIRIO 1500, to the intensive farmer always looking to boost productivity interested in large tanks (up to 1600 gal) and wide booms (up to 118 ft).

### INDEX

Easy use means productivity.	pag. 4
A genius onboard: the spraying computer	pag. 5
A good spraying begins with easy maintenance	pag. 6
Choose your sprayer, begin with the boom !	pag. 8
Technical features of booms	pag. 10
“VENTO,” the good wind for your crops!	pag. 12
Ask for more, customize!	pag. 14
SIRIO, compact & light	pag. 16
POMPEO P, versatile & reliable	pag. 18
POMPEO S, makes all land flat	pag. 20
Technical features	pag. 22
Versions	pag. 24

# TRAILED SPRAYERS

## EASY USE MEANS PRODUCTIVITY.



Time is money for anyone, but often for farmers a quick response in field spraying means the difference between a good harvest and losing the work of many months! Gaspardo sprayers are built for the easiest setup ever, and reduce downtime to as little as possible.



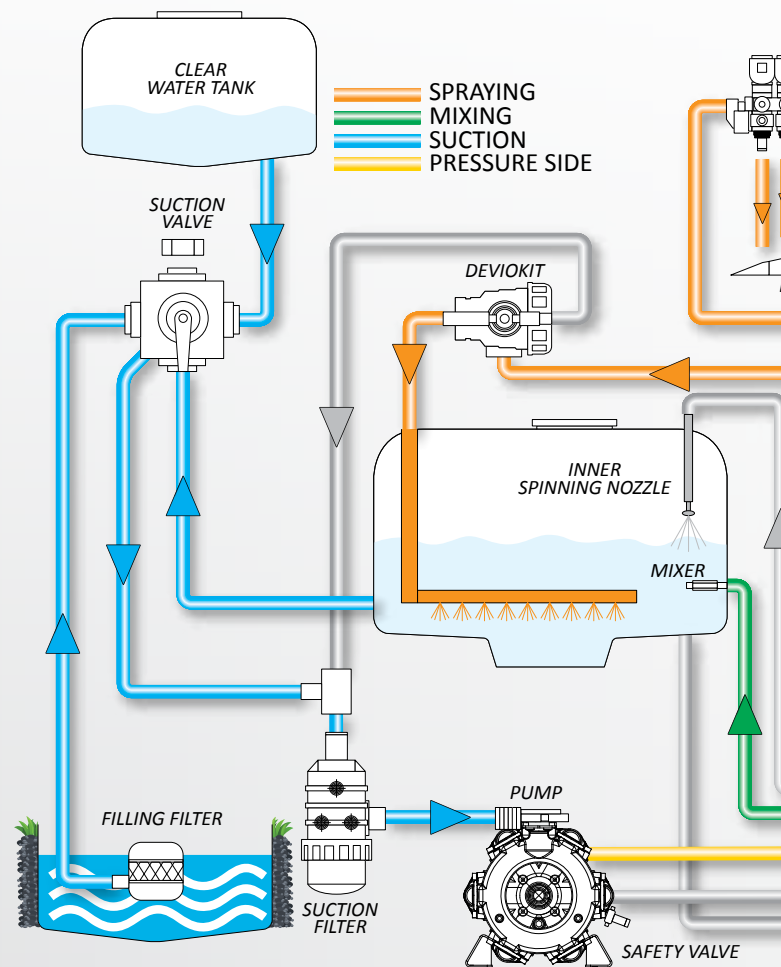
### ORDER BEFORE ALL!

The control panel groups all the functions of the machine: all levers and main controls are clustered on the left side with clear indications for suction and delivery valves. Pre-mixer and hand-washing tap are very close to the main panel to ease any operation in preparing treatment.



### PREMIXER:

The pre-mixer reduces contact with hazardous chemicals during preliminary operations, and begins product dilution with flow from the main tank. The bottle-cleaner nozzle allows 100% of the product to be used, reducing the waste in empty bottles. A smart parallelogram with spring lock takes the basket in comfortable position for the user to pour product and move levers, at the end of preparation the pre-mixer moves back close to the main tank.

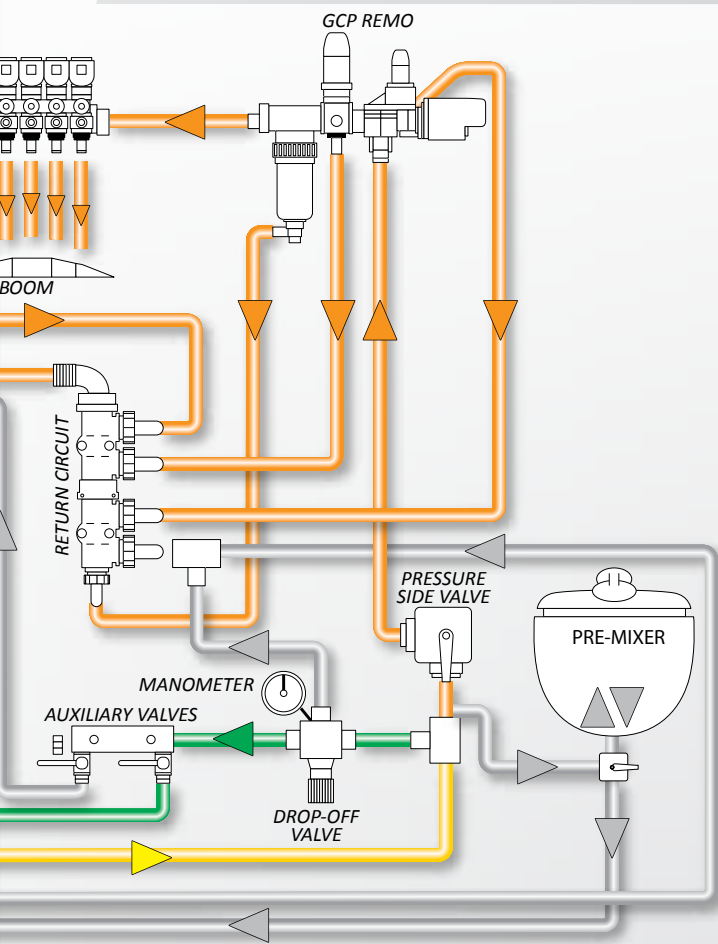


Discard valve for total emptying of main tank

## A GENIUS ONBOARD: THE SPRAYING COMPUTER

Pressure control units are available on 3 levels: manual, electrical or computer assisted (see table pag. 23).

Mechanical ones have a remote general switch to control the ON/OFF function from the driver's seat. Machines with an electric pressure adjuster have a set of electro-valves to control all of the booms movements from a console installed inside the cab; with this solution a single double effect oil fast plug is required.



On all the range, it is possible to install the spraying monitor "GENIUS WAVE" (based on the Muller Spraydos computer). The system fastens the spraying setup and adapts to tractor speed during real time product distribution. All the operations in this way are easier as the driver can concentrate on aspects other than maintaining constant speed.



As further evolution, the ISOBUS version "EASY-SPRAY" is available, which adds to all main functions of spraying computer the automatic management of boom sections and the GPS row marker. This means there are no unsprayed or overlapping areas: profitability and environmental sustainability of the crop will be improved at once!



Electro-valves for boom sections control

# TRAILED SPRAYERS

## A GOOD SPRAYING BEGINS WITH EASY MAINTENANCE

When the spraying operation has ended, the most important part for a good treatment begins: maintenance for the next run!

Gaspardo machines adopt all solutions that make these important operations easier and automatic.

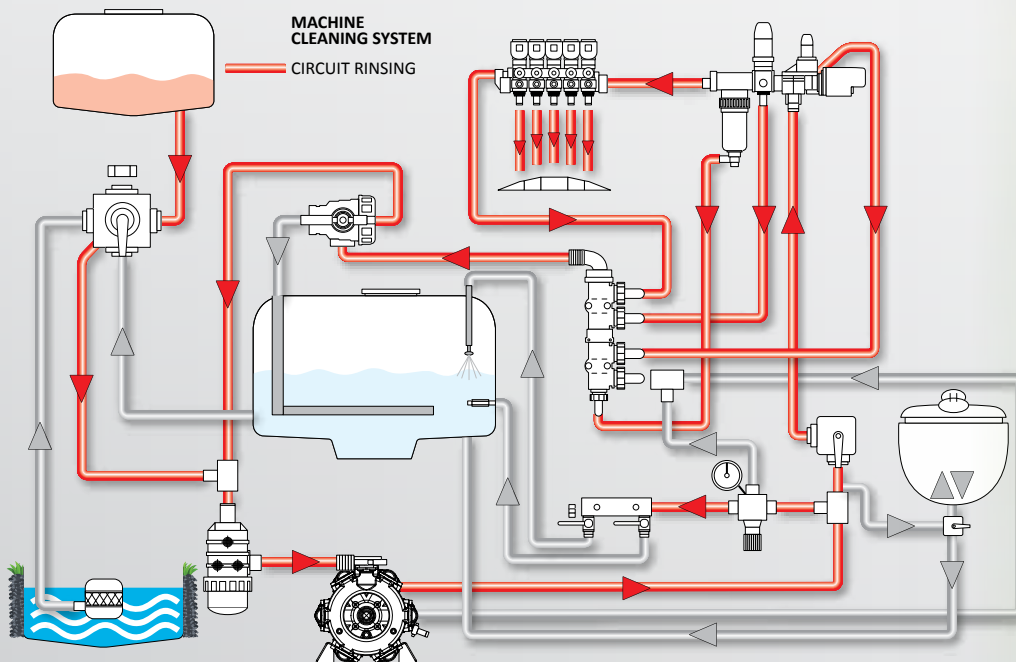
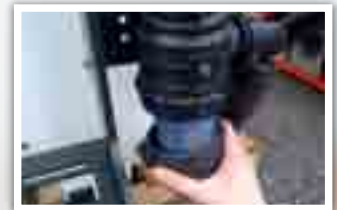


### INNER SPINNING NOZZLES:

Inner 360° spinning nozzles and the smooth wall of the tanks allow the main tank to be cleaned effectively with no exposure of the user to chemicals. No residues of the previous product are left in the tank in order to prevent any contamination or damage to the crop! Position of emptying valve and particular shape of container, facilitate complete rinsing water drainage from the tank.

### FILTERS

All filters are visible and easily detachable for cleaning.



### DEVIKIT:

The Deviokit system, standard on all machines, allows the water circuit to be cleaned without any product dilution in the main tank: field operations can thus be stopped and backed up later with no risk of product clogging in the pipelines.



# TRAILED SPRAYERS

## CHOOSE YOUR SPRAYER, BEGIN WITH THE BOOM!

Gaspardo has always worked to meet the needs of every customer: in the new sprayer range this philosophy has been followed with the possibility to choose from many different booms on the basic models.



### Work U

Work U boom is available only on the SIRIO 1500 and 2000 models, in transport configuration the two arms have a rear vertical position. Self-levelling is a standard feature, as the 3 ft hydraulic lifter. In the electrical controller version, all boom movements are managed by a single double effect oil distributor.



### ALA C

The basic model from the "ALA" family: when closed the boom is folded sideways along the main tank; working widths are 52½ ft or 59 ft. With second arm section folding upwards, it is possible to easily overcome side obstacles at the edge of working width. Standard features include single-jet nozzles with quick release.



### ALA 500

Model with working widths between 49¼ ft and 72¼ ft, last section of the arms folds upwards allowing side obstacles to be easily overcome. Boom is featured with the hydraulic lock of stabilizer, tilt corrector, independent geometry, tri-jet nozzles and hydraulic lifting.



### ALA 600

ALA 600 is the boom with side folding of the last section, available in working widths up to 78" ¾: this particular configuration prevents any possible accident that results from hitting high tension lines. Boom is featured with hydraulic lock of stabilizer, tilt corrector, independent geometry, tri-jet nozzles and 5 ft hydraulic lifting.





## ALA 700

ALA 700 features bigger sprayers as large as 105 ft of working width. Last section folds sideways with no risk of accident involving high tension cables. Boom is featured with hydraulic lock of stabilizer, tilt corrector, independent geometry, tri-jet nozzles and 5 ft hydraulic lifting. Hydro-pneumatic dampening is installed on cylinders of parallelogram.



### STABILIZER

To spray chemicals uniformly, it is a primary issue to keep the boom stable and always parallel to the soil. The stabilizer device has a key role in matching this target, especially when operating at high speeds. On trailed

machines, booms are hung with single-hinge or parallelogram devices between boom and frame connection. Oscillation is reduced by gas-pistons or return-springs.



### STABILIZER LOCK

A single ram can lock or unlock stabilizer oscillation: a pin is guided by a metal profile into position, to always get a quick and reliable action independent of stabilizer position.



## ALA 800

The most complete and professional boom from ALA range, double folding system and the oblique hinge of first arm make it extremely compact when closed also in wider versions (105 and 118 ft). Boom is featured with hydraulic lock of stabilizer, tilt corrector, independent geometry, tri-jet nozzles and 5 ft hydraulic lifting. For a top range configuration the air sleeve "VENTO" is available on 69 ft and 78¾ ft versions.



### INDEPENDENT GEOMETRY

Cylinders on the top of the first arm allow the two boom sections to get different angles from the other. This function is very useful for staying parallel to the soil on hilly lands or hollows.



### HYDRO-PNEUMATIC DAMPENING.

SIRIO has a nitrogen accumulator directly connected to the cylinder of the vertical lift; in POMPEO this device is part of the circuit of parallelogram lifting. Boom dampening takes part to oscillation reduction and prevents damages from mechanical solicitations on most rough soils.

# TRAILED SPRAYERS

## TECHNICAL FEATURES OF BOOMS



WORK U	
Working widths (m)	39'' $\frac{1}{3}$ - 46'' - 49'' $\frac{1}{4}$ - 52'' $\frac{1}{2}$ - 59''
Boom sections	5 or 6
Opening/closing	Hydraulic
Cylinders	2 or 4
Required oil fast plugs (DE)	3 or 1*
Lifting system	Hydraulic
Closing system	Vertical
Last section closing	Vertical
Boom suspension	Hydropneumatic
Self-levelling	●
Stabilizer lock	●
Tilt correction	●
Independent geometry	-
Air sleeve	-

\* 1 single DE plug on electric or electronic versions.

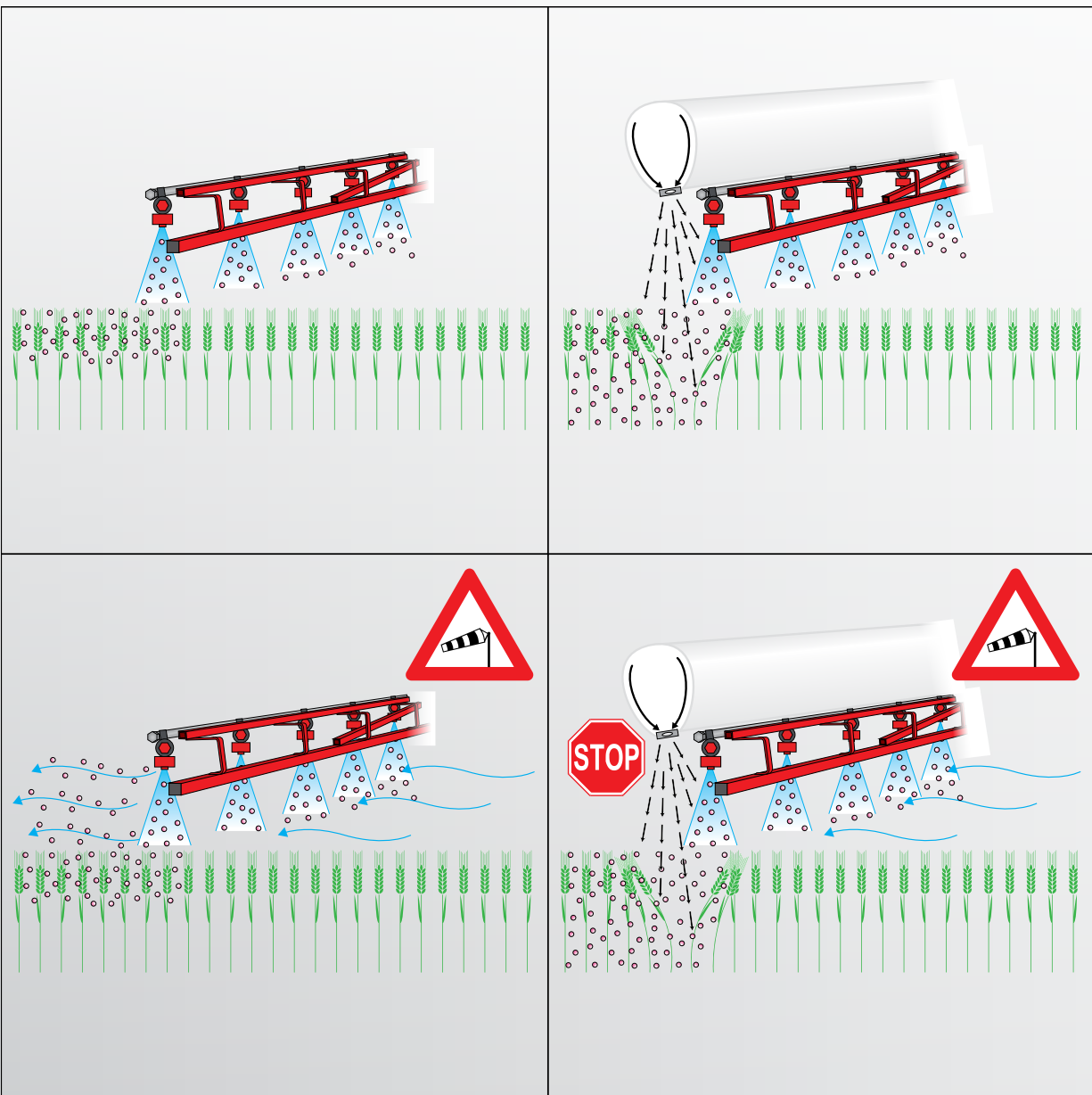


ALA C	ALA 500	ALA 600	ALA 700	ALA 800
52"¼ - 59"	49" - 52"½ - 59" - 62"⅓ - 69" - 72"	59" - 62"⅓ - 59" - 72" - 78"¾	78"¾ - 88"½ - 92" - 105"	69" - 78"¾ - 105" - 118"
5 or 6	5 or 7	5 or 7	7 or 9	7 or 9
Hydraulic	Hydraulic	Hydraulic	Hydraulic	Hydraulic
4	4+2	4+2	4+2	6+2
3 or 1*	1	1	1	1
Hydraulic	Hydraulic	Hydraulic	Hydraulic	Hydraulic
Sideways	Sideways	Sideways	Sideways	Sideways
Vertical	Vertical	Sideways	Sideways	Vertical
Hydropneumatic	Hydropneumatic	Hydropneumatic	Hydropneumatic	Hydropneumatic
●	●	●	●	●
●	●	●	●	●
●	●	●	●	●
-	●	●	●	●
-	0	0	0	0

# TRAILED SPRAYERS

## “VENTO”, THE GOOD WIND FOR YOUR CROPS!

This useful device is available on SIRIO\* and POMPEO range and reduces the wind drift of treatment particles, avoiding any damage or contamination to non-target crops in neighbouring fields. The angle of the air stream “opens” the canopy and allow product to penetrate lower layers of vegetation, for better efficacy in pest control.



\*Not available on Sirio 1500 and 2000



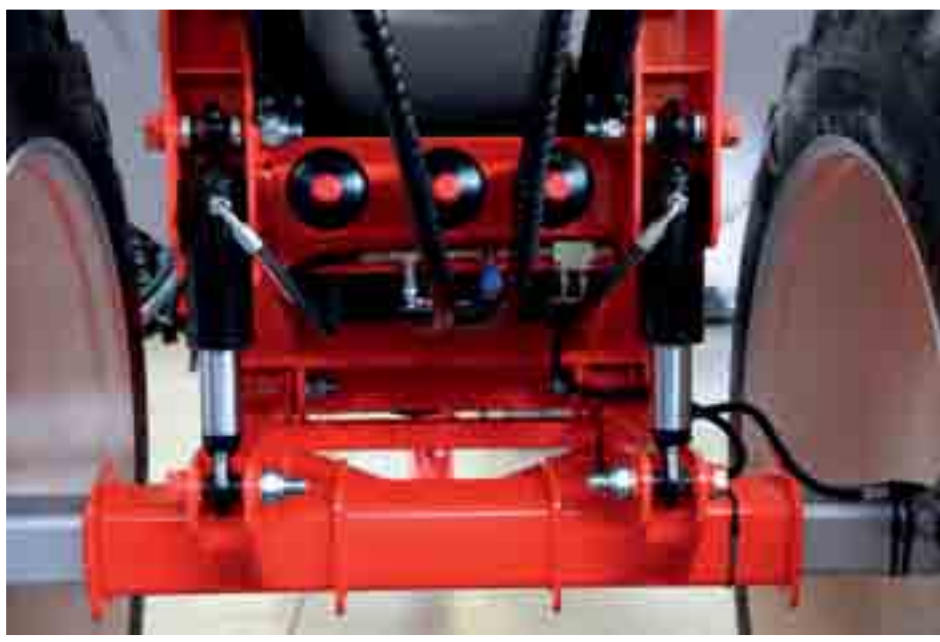
The fan running all the system has a diameter of 27"½ or 31" ½: air speed can be adjusted from 0 to 71 mph through a potentiometer on spraying computer. An additional cylinder can vary the angle of the air flow to change incidence of the air stream in crop "opening". The fan is fed by an independent hydraulic circuit connected to PTO shaft; this solution feeds also all boom movements with the result of more immediate responses and no need for fast connections to the tractor.



# TRAILED SPRAYERS

## ASK FOR MORE, CUSTOMIZE!

The range of sprayers has many variants that share the same attention to design and the same sturdy structure. For all models, many features are available by request to adapt the machine to the needs of every farmer.



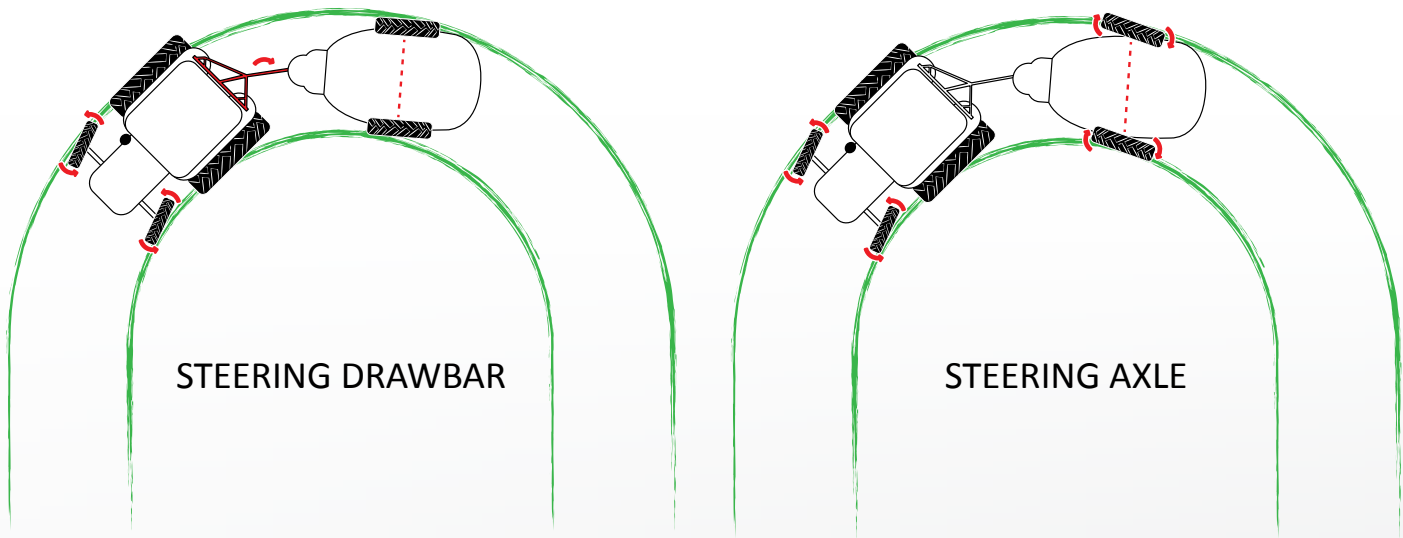
### **SUSPENDED AXLES: IMPROVED STABILITY**

The “S” series models (POMPEO S 2200-3200-4200-6000) have standard hydro-pneumatic suspension on the axle: this enhances stability on field of boom and machine, allowing it to be operated at high speeds also on most uneven soils.



### **ADJUSTABLE TRACK WIDTH**

Sprayer wheels can be set up to follow tractor width, or to perfectly enter the inter-spacing of row planted crops. Telescopic system of square axle and pin-locking make this operation quick and easy.



## STEERING AXLES AND DRAWBARS: RESPECT YOUR CROP

These solutions, available upon request, allow the sprayer to follow at the best the track left by the tractor. Reduction of plant crushing will improve productivity from field headlands and at the same time avoid spreading of infection from parasites affecting damaged plants. Steering drawbar in semi-mounted configuration is available for SIRIO and POMPEO models up to 845 gal tank capacities. Larger machines (POMPEO S 4200 and 6000) are featured with steering axle managed by the ISOBUS system.

## WIDE CHOICE OF TYRES

Depending on main use of the sprayer, size of tyres is important to increase floating effect of machine on wet or too soft soils or to reduce as little as possible the crushing of crops in late season spraying. Choice of tyres size is thus very wide to customize at the best every sprayer!

MODEL	VERSION	230/95 R36	230/95 R44	270/95 R44	270/95 R48	300/95 R46	340/85 R38	340/85 R48	380/85 R28	380/90 R46	420/85 R38	480/80 R42
SIRIO	1500	●	○	-	-	-	-	-	-	-	-	-
	2000	●	○	-	-	-	-	-	-	-	-	-
SIRIO	2200	●	○	○	○	○	○	○	○	-	○	-
	3200	●	○	○	-	○	-	○	-	-	○	-
POMPEO P	2200	-	○	●	○	○	○	○	-	-	○	-
	3200	-	○	○	●	○	-	○	-	-	○	-
POMPEO S	2200	-	○	○	●	○	-	○	-	-	○	-
	3200	-	○	○	●	○	-	○	-	-	○	-
POMPEO S	4400	-	-	-	-	○	-	●	-	○	-	○
	6500	-	-	-	-	○	-	●	-	○	-	○

# SIRIO

## COMPACT & LIGHT

**SIRIO** is ideal for farmers with small fields looking for good autonomy and compact design of vertical boom lifting. Among the four models of the series, the smallest has a tank of only 396 gal: this is an optimal feature to spread the weight of tractor and sprayer on 3 axles, in this way reducing soil compaction. This solution was studied specifically for horticultural growers, always careful to soil health.



All models have a compact vertical hydraulic lift system: lifting range is 3 ft in smaller machines, 3 ½ ft on 2200 and 3200 tanks. A nitrogen accumulator is connected to the lifting cylinder to guarantee boom dampening. SIRIO is available in different version with manual, electric or computer assisted (standard or ISOBUS) pressure control unit. Air sleeve can be installed when the sprayer is featured with ALA 500 or 600 boom.





# POMPEO P

## VERSATILE & RELIABLE

**POMPEO P** was designed to satisfy all with many configurations. Its main strength is the powerful parallelogram lifter with 5 ft of range, dampened by a nitrogen accumulator system. With this configuration, it is possible to match the machine to wider booms in the range, up to 118 ft.



The sprayer is a top range machine and can be featured to different levels: pressure control unit is available from manual version to ISOBUS computer. The air sleeve can be installed by request on both 581 gal or 845 gal tanks matching with ALA 500, 600 or 700 up to 92 ft of working width.



# POMPEO S

## MAKES FLAT EVERY LAND!

**POMPEO S** is the fully suspended sprayer from Gaspardo (boom + wheel axle): this feature makes it extremely stable in field for an excellent uniformity of product application also at high speeds. Performance is excellent concerning hourly productivity; with this solution, it is possible also to use very large tanks up to 1717 gal for an extended field operating range.

Matched with ISOBUS spraying computer and the "VENTO" air sleeve, it is possible to get the best from **POMPEO S**. With the useful 26 ¼ ft long filling tube complete of floating filter, it is possible to make even faster refilling operations, for unlimited productivity!





# TRAILED SPRAYERS

## TECHNICAL FEATURES



MODEL	VERSION	ACTUAL TANK VOLUME (GAL)	CLEAR WATER TANK (GAL)	PUMP FLOW RATE (GAL/MIN)	PRESSURE (psi)	BOOM SECTIONS	BOOM LIFTING (FT)	LIFTING TYPE	TRACK WIDTH (IN)	STANDARD TYRES
SIRIO	1500	449	53	42 or 58	290	5 or 6	h 3	Vertical	4 ¾-6 ¾	230/95-R36
	2000	555	53	42 or 58	290	5 or 6	h 3	Vertical	4 ¾-6 ¾	230/95-R36
SIRIO	2200	634	79	66	290	5 or 6	h 4 ½	Vertical	4 ¾-6 ¾	230/95-R36
	3200	845	79	66	290	5 or 6	h 4 ½	Vertical	4 ¾-6 ¾	230/95-R36
POMPEO P	2200	634	79	66	290	5 or 6	h 5	Parallelogram	5 ¼-7 ½	270/95-R44
	3200	845	79	66	290	5 or 6	h 5	Parallelogram	5 ¼-7 ½	270/95-R48
POMPEO S	2200	643	79	66	290	5 or 7	h 5	Parallelogram	6-7 ½	270/95-R48
	3200	845	79	66	290	5 or 7	h 5	Parallelogram	6-7 ½	270/95-R48
	4400	1162	79	79	290	7 or 9	h 5	Parallelogram	6-7 ½	340/85-R48
	6500	1717	79	79	290	7 or 9	h 5	Parallelogram	6-7 ½	340/85-R48

Measure range of track width can vary depending on machine configuration (braking system and tyre section)



TECHNICAL FEATURES	SIRIO 1500-2000	SIRIO 2200-3200	POMPEO P 2200-3200	POMPEO S 2200-3200	POMPEO S 4400-6500
Main tank volume (gal)	449-528	581-845	581-845	581-845	1162-1717
Boom width range (ft)	39 ½-59	59-78 ¾	59-118	59-118	78 ¾-118
Central control panel	-	•	•	•	•
Mixing circuit	•	•	•	•	•
Clear water tank	•	•	•	•	•
Hand washing tank	•	•	•	•	•
Circuit rinsing system	•	•	•	•	•
DEVIOKIT	•	•	•	•	•
Inner spinning nozzles	•	•	•	•	•
Pre-mixer	•	•	•	•	•
Filling hose 26' ¼ (Ø 2")	•	o	o	o	o
Foam row-marker	o	o	o	o	o
Tri-jet nozzles	o	•	•	•	•
PTO shaft	•	•	•	•	•
Independent hydraulic pump (instead of PTO)	o	o	o	o	o

PRESSURE CONTROL UNIT	SIRIO 1500-2000	SIRIO 2200-3200	POMPEO P 2200-3200	POMPEO S 2200-3200	POMPEO S 4400-6500
Manual	•	•	•	-	-
Electric	•	•	•	•	-
Computer Genius Wave (Spray-dos)	•	•	•	•	•
Computer Easy-spray (ISOBUS – Basic terminal)	o	o	o	o	o
GPS row marker (per Genius Wave)	o	o	o	o	o

• = standard feature / o = optional feature / - = not available / h = hydraulic / m = manual

# TRAILED SPRAYERS

## OPTIONALS



### **FILLING TUBE.**

The 26 ¼ ft long tube (ø 2") allows the main and the clean water tank to be quickly and easily filled directly from external sources like water courses, basins or cistern-carts; the floating filter prevents sand or any sediment that can be sucked from the bottom.



### **FOAM-MARKER.**

The foam row marker is a good alternative if no GPS device is available or no tramline was used to identify working passes. A device releases foam spots at the edge of the boom to reduce overlapping or non-sprayed areas.





## TRAMLINER

The tramline device is available upon request on the full range of GASPARDO seed drills: it stops distribution in rows corresponding to sprayer tracks, saving up to 4% of seeding rate with no yield loss. In this way in late season it will be possible to clearly identify passes with no GPS or row marker!



## BRAKES

Depending on different national laws, hydraulic or air brakes are available upon request to increase safety level during transport or storage of machine.

# TRAILED SPRAYERS

## BOOM/MODEL COMBINATIONS



	Working widths (ft)	SIRIO 1500	SIRIO 2000	SIRIO 2200	SIRIO 3200	POMPEO P 2200	POMPEO P 3200	POMPEO S 2200	POMPEO S 3200	POMPEO S 4400	POMPEO S 6500
Work U	39 ½	X	X								
Work U	46	X	X								
Work U	49 ¼	X	X								
Work U	52 ½	X	X								
Work U	59	X	X								
ALA C	52 ½	X	X								
ALA C	59	X	X								
ALA 500	49 ¼	X	X								
ALA 500	52 ½	X	X								
ALA 500	59	X	X	X	X	X	X	X	X		
ALA 500	62 ½			X	X	X	X	X	X		
ALA 500	69			X	X	X	X	X	X		
ALA 500	72			X	X	X	X	X	X		
ALA 600	59			X	X	X	X	X	X		
ALA 600	62 ½			X	X	X	X	X	X		
ALA 600	69			X	X	X	X	X	X		
ALA 600	72			X	X	X	X	X	X		
ALA 600	78 ¾					X	X	X	X	X	X
ALA 700	78 ¾					X	X	X	X	X	X
ALA 700	88 ½					X	X	X	X	X	X
ALA 700	92					X	X	X	X	X	X
ALA 700	105									X	X
ALA 800	69			X	X						
ALA 800	78 ¾			X	X						
ALA 800	105					X	X	X	X		
ALA 800	118					X	X	X	X	X	X



# GASPARDO



## **MASCHIO** **GASPARDO** the winning team

### **MASCHIO GASPARDO S.p.A.**

Headquarters  
Via Marcello, 73  
35011 Campodarsego - Padova - Italy  
Tel. +39 049 9289810 - Fax +39 049 9289900

e-mail: [info@maschio.it](mailto:info@maschio.it)  
<http://www.maschionet.com>

### **MASCHIO GASPARDO North America, Inc.**

112 3rd Ave East  
DeWitt, IA 52742 - USA  
Phone: +1 (563) 659-6400  
Fax: +1 (563) 659-6404  
[info@maschio.us](mailto:info@maschio.us)  
[www.maschio.us](http://www.maschio.us)

Production plant  
Via Mussons, 7  
I - 33075 Morsano al Tagliamento (PN) Italy  
Tel. +39 0434 695410 - Fax +39 0434 695425

**COMPANY WITH QUALITY MANAGEMENT  
SYSTEM CERTIFIED BY DNV  
= ISO 9001:2008 =**

DEALER: