

S SERIES

270 - 400 HP

VALTRA

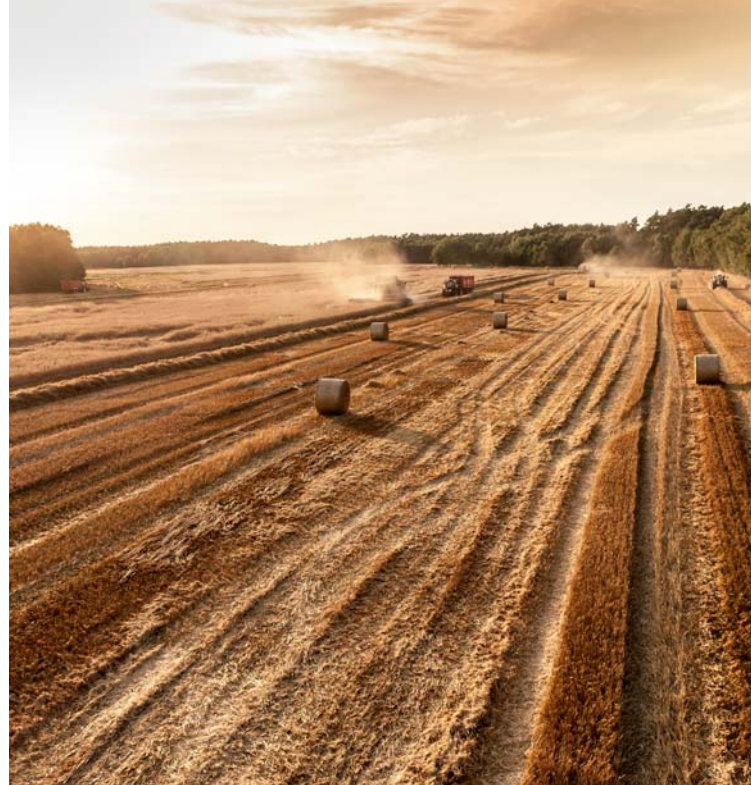


**YOUR
WORKING
MACHINE**

A BIG TRACTOR YOU CAN RELY ON FOR BIG RESULTS

CONTENTS

<i>Valtra S Series</i>	4
<i>ACGO POWER engine</i>	10
<i>Transmission</i>	12
<i>Ergonomics & efficiency</i>	14
<i>Technology helps manage productivity</i>	18
<i>Services</i>	22
<i>Technical details</i>	26





FOR PROFESSIONALS WITH STRONG EXPERIENCE

Valtra is an international brand from Scandinavia. Our Nordic heritage means that Valtra tractors perform the tasks they were designed and bought for – safely and efficiently. This is backed up by Valtra's values: individuality, reliability and functionality.

Valtra's strength has always been our willingness to listen to our customers. According to customer surveys, the three most important criteria for selecting Valtra are reliability, low operating costs and a high return on investment. The fourth generation S Series has been tested in demanding conditions to optimise its technical attributes, ergonomics, serviceability and productivity. We are confident that the new S Series will meet all your demands, both as a farmer and as an investor.





**A PARTNER TO FARMERS
FOR OVER 60 YEARS**



Valtra has been building tractors for over 60 years and grown to become one of the most recognised international tractor brands. Valtra now manufactures over 23,000 tractors a year. With our roots in Finland, all Valtra tractors are the products of Scandinavian industrial design and practical technical solutions. We became part of the AGCO family in 2004. As the global leader in agricultural technology, AGCO is proud to invest in Valtra's strong expertise and fine products.

As a Valtra customer, you also benefit from the support of AGCO's global organisation for financing, extended warranties, service contracts, leasing services, training, loyal customer programmes, precision farming technologies, telemetry solutions, and the biggest distribution network of agricultural machinery. Your Valtra S Series tractor comes with services that support the profitability of your business now and in the future.

HAVE YOU CONSIDERED THE PROFITABILITY OF YOUR INVESTMENT? WE HAVE

The fourth generation Valtra S Series is a tractor whose balanced performance helps you get the most out of your new investment, by maximising output and minimising costs. We have designed for you a reliable machine to which you can combine all the services you want. This allows us to ensure the best possible return on your investment.

S Series tractors have everything you need but nothing that is unnecessary. Each detail has been carefully thought out, as profitability is the sum of competitive technology, reliability, operating costs, ergonomics, services and resale value. This makes Valtra the rational choice of investors.





THE SEEDS OF SUCCESS HAVE BEEN SOWN



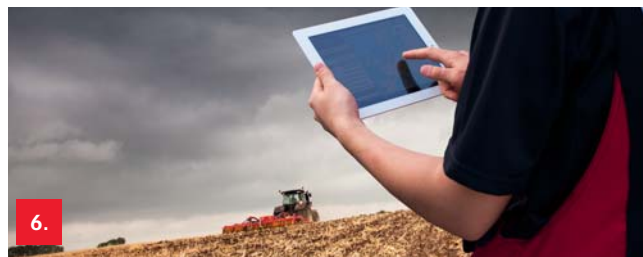
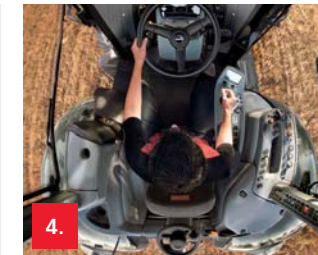
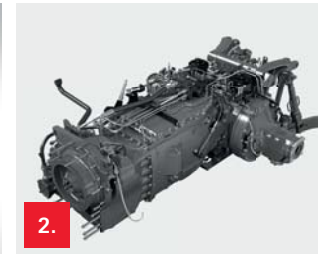
The Valtra S Series is a big tractor and a big investment that you can rely on for big results. Its basic features have been designed to handle even the toughest tasks. A powerful engine, stepless transmission and optimal weight distribution ensure efficient performance. The hydraulic output is exceptional for use with heavy-duty implements, either on the field or in the forest. The large cab offers a spacious work environment, and driving comfort is in a class of its own.

Valtra is the only tractor manufacturer whose basic philosophy includes the ability to work equally well in both directions (Valtra TwinTrac reverse-drive system), which further improves the productivity and flexibility of the tractor.

RELIABLE TECHNOLOGY, CAREFULLY CONSIDERED DETAILS

The reliability of the S Series is the result of the perfect integration of the carefully considered details. The combination of the perfect engine and transmission with the latest functional design and optimal usability makes the S Series a tractor unlike any other you have tried before.

Valtra has many patented solutions that enhance reliability, ergonomics and usability. All Valtra tractors are manufactured according to the most stringent quality standards using only the best available components. We always listen to the opinions of our customers when developing our tractors, and many individual details are the result of practical experience. We also have a rigorous testing programme that covers extreme conditions, from sugar cane plantations in Brazil to the African savannah, and not forgetting the Finnish winter.



VALTRA S SERIES - A STRONG PACKAGE

- 1. AGCO POWER 84 AWF engine:** A Finnish powerhouse and the world first! The first tractor engine to comply with the Tier 4 final emissions standard. Optimal reliability and efficiency.
- 2. AVT transmission:** The market leader that meets the toughest demands for reliability and economy in modern farming. Made in Germany.
- 3. Valtra's ergonomic controls,** spacious cab and pneumatic cab suspension ensure that the driver stays fresh and alert all day.
- 4. Valtra tractors work in both directions,** significantly increasing productivity (by up to 15%). Rotating driver's seat standard on all models, **TwinTrac** reverse-drive system optional.
- 5. Each S Series tractor is equipped for precision farming. Auto-Guide Ready** comes as standard, making the tractor compatible with the latest autosteer systems.
- 6. Valtra can also deliver your S Series tractor with the Auto-Guide 3000** steering assist system and AgCommand telemetry.

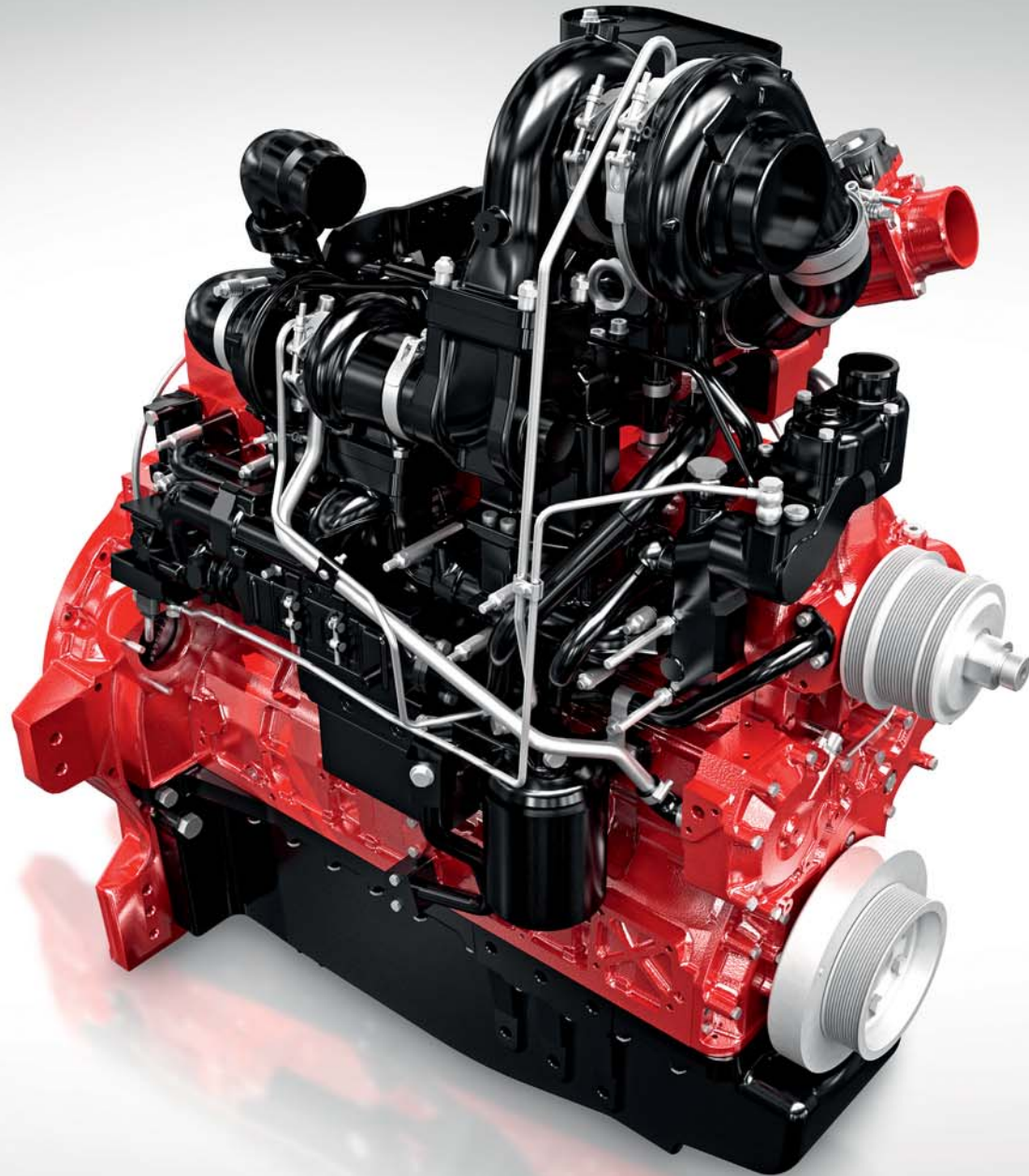


1. Valtra user interface
2. Hydraulic front axle suspension
3. Integrated front linkage (50 Kn)
4. AGCO POWER 8.4l SCR engine (up to 400hp)
5. Work lights, 4+2 in front, 6 at rear
6. TwinTrac
7. Ergonomic cab (69 dBa)
8. Pneumatic cab suspension
9. CVT transmission (AVT - AGCO Variable Transmission)
10. AdBlue tank (60 litres)
11. Diesel tank (630 litres)
12. Long wheelbase (3105 mm)
13. New projector headlights (H7)
14. Valtra's 4th generation design (improved visibility)
15. Auto-Guide readiness as standard

BEST ENGINE ON THE MARKET

When you invest in a Valtra S Series, you are also investing in the most reliable and efficient engine technology available on the market. AGCO POWER's roots as an engine manufacturer reach back over 60 years. All S Series engines come from the AGCO POWER factory in Finland. AGCO POWER is the global leader in off-road engines and the factory manufactures over 70 000 engines a year.

The reliable 8.4 AWF AGCO POWER engine is the key to the productivity of the S Series. The engine uses the latest AGCO POWER technology to comply with the Tier 4 final, stage 4 emissions standard. The same technology also ensures the reliability of the engine without any increase in operating costs. AGCO POWER's SCR technology was introduced with the S Series back in 2008, making it the first tractor in the world to feature this technology.





TWIN TURBO POWER

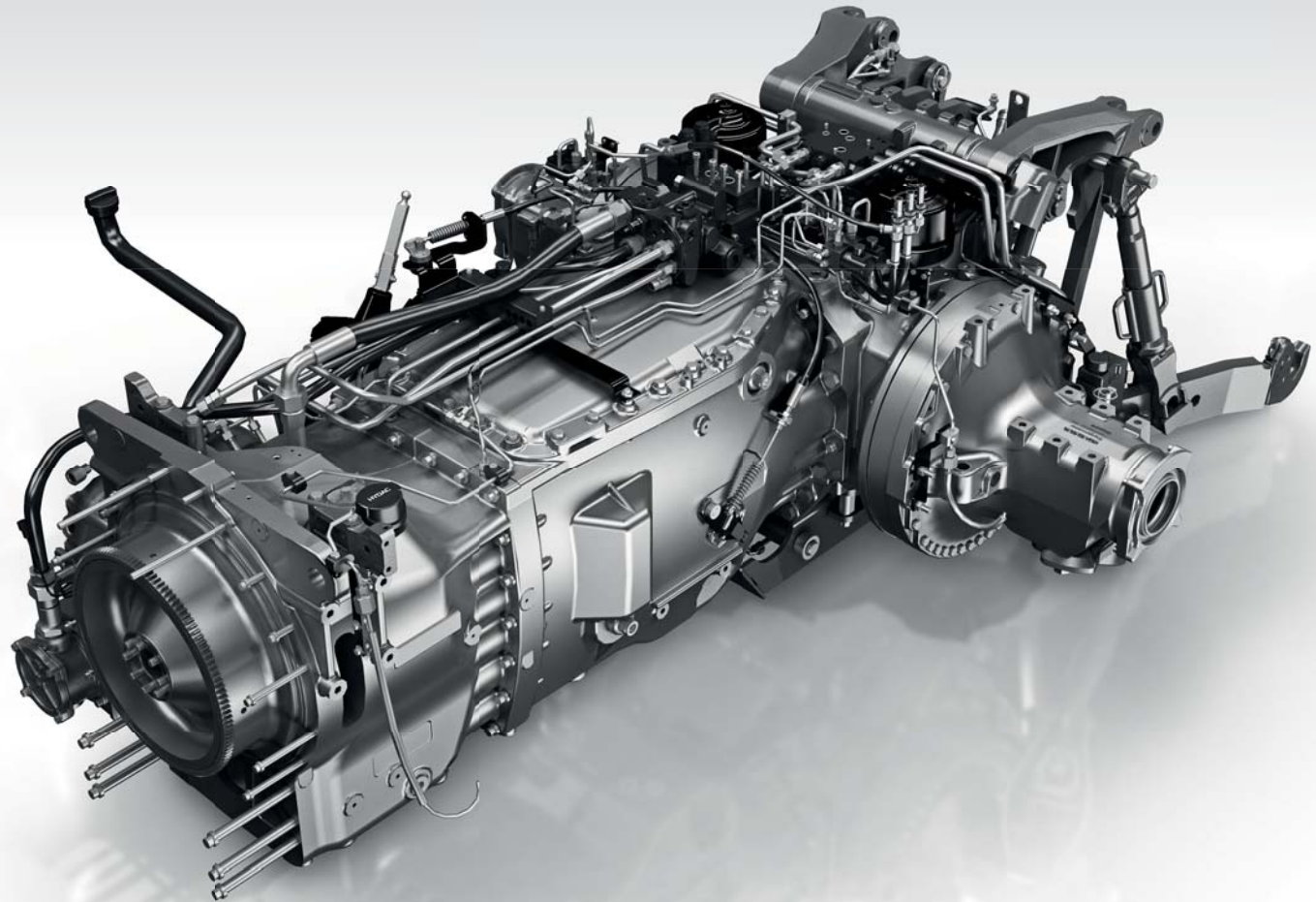


The new Valtra S Series has two sequential turbochargers for better torque at lower revs and lower exhaust temperatures, which in turn increases durability and reduces maintenance requirements. It also enables even better driving characteristics and lower emissions reliably without the need for expensive technical solutions.

The fuel economy of the S Series has always been competitive relative to the achieved kilowatt hours, for example relative to the number of cubic metres of wood that can be chipped or the number of hectares that can be tilled. The 8.4 AWF AGCO POWER engine in the new S Series reduces fuel consumption even further (5%). Exhaust gas recirculation is also employed to reduce the consumption of AdBlue. According to Profi magazine (7/2012), fuel consumption is just 258 g/kWh, which is 13.1% lower than average for other tractors tested by the magazine.

THE MOST POPULAR STEPLESS TRANSMISSION, ON THE MARKET

The overall efficiency of the Valtra S Series is further enhanced by the stepless AGCO Variable Transmission (AGCO AVT). Manufactured by AGCO in Germany, this transmission has been the European market leader among big tractors for years. Its popularity is based on its versatility and, above all, its fuel efficiency. Especially for contracting work that requires a lot of driving between locations, the AGCO Variable Transmission enables you to drive efficiently at low engine speeds.





**AN INNOVATION THAT
COMBINES THE BEST**

The S Series combines leading innovations by Valtra, AGCO POWER and German engineers. The intelligent tractor control system developed by Valtra combines these to create an unbeatable package: power that is efficient, easy to use and reliable.

OPTIMISED TRANSMISSION

The AGCO Variable Transmission features different work areas for tasks requiring different speeds. Work area A is for all work situations requiring heavy pulling force, while work area B is for general road transport. This enables the pulling power and transmission efficiency to be optimised. For example, when driving at low engine speeds, the fuel savings are considerable.

UP TO 10% MORE POWER

Valtra's innovative SigmaPower is now available on the S Series. Whenever extra power is required by the PTO or hydraulics, the engine's electronic management system boosts output by as much as 10% - up to 400 horsepower on the biggest S Series models. Power boost is also available when driving at speeds of over 20 km/h.

DRIVER COMFORT AND EFFICIENT WORKING

The patented Valtra ARM driver's armrest provides excellent support in all situations and is easy to use. The controls on the armrest make it easy to control the transmission, hydraulics and ground speed. The U-Pilot headland management system can also be used to control implements. The colour screen is easy to read, and transmission settings can be preset to make your work even easier.



SELECT THE OPTIMAL DRIVING MODE FOR YOUR WORK AND YOURSELF

With the experience of tens of thousands of operating hours, a reliable and proven way to control the transmission has been selected for the S Series. You can control the stepless transmission the way that suits you best using the accelerator pedal, the cruise control system or the easy-to-use CVT lever. You can also select from two operating modes: By selecting the right operating mode for your work, you can optimise fuel efficiency, work output and driving comfort.



Driving speed, cruise on

Transmission ratio

Engine speed



Driving speed

Transmission ratio

Engine speed

AUTOMATIC MODE

Automatic mode is the default setting when starting the engine. The operating principle is simple: automatic mode uses the highest possible transmission ratio to optimise fuel economy. For example, when pulling a load in difficult terrain the transmission adjusts the ratio (engine speed) to maintain a constant ground speed. There is two ground speed cruise control settings and an engine speed cruise control setting.

MANUAL MODE

When you want to control both the ground speed and the engine speed precisely, you can select manual mode. This mode allows the user full control of the engine RPM and forward speed, without the computer making decisions. This is useful when working with a baler or when harvesting special crops.



WORK FASTER AND IN MORE COMFORT

The fourth generation cab on the Valtra S Series combines the best Nordic design with optimal usability. Studies prove that good ergonomics improve work performance, especially when using the Valtra TwinTrac reverse-drive system.

The cab features four-point pneumatic suspension, Valtra AutoComfort, that utilises the latest technology. Sensors relay information to the control system, which makes sure that the cab is always in the right position. AutoComfort also allows you to adjust the suspension according to your personal preference.

The S Series is designed for working 24/7, so air conditioning comes as standard. Even the driver's seat is ventilated. Working in the S Series is comfortable in all seasons of the year. Other standard equipment includes six working lights to the front and rear, and xenon lights are available as an option.





PATENTED VALTRA TWINTRAC REVERSE-DRIVE SYSTEM MAKES WORKING IN BOTH DIRECTIONS EFFICIENT



Valtra's patented TwinTrac reverse-drive system makes your work even more efficient, especially when working with mowers and other heavy-duty implements. S Series tractors have been designed from the outset to work effectively in both directions. Studies have shown that working in reverse with Valtra tractors is even more efficient than working in the forward direction in certain applications due to the superior visibility. The optimal ergonomics make it easier to work longer hours, which further improves productivity.

REVERSE-DRIVING IN ONE EASY MOVEMENT

Switching to the reverse-driving position is fast and easy. An adjustable steering column is located at the rear of the cab along with an accelerator pedal, brake pedal and "clutch" pedal. All the other controls are located on the Valtra ARM driver's armrest, which rotates 180 degrees together with the driver's seat.

TECHNOLOGY HELPS MANAGE PRODUCTIVITY

The new S Series makes it easy to utilise AGCO's latest technological solutions in order to further improve the productivity and profitability of your farming or contracting operations. AGCO is actively developing precision farming technologies as part of its FUSE strategy. One example of the user-based design of these technologies is that FUSE is an open system that can be used together with the machinery, products and applications of other manufacturers. This allows you to manage data from all the machinery and equipment on your farm so that the entire production chain is part of the same system. FUSE also makes the S Series compatible with future technologies.

FUSE
TECHNOLOGIES





AGCOMMAND

Your tractor should be ready for use whenever needed. Electronic diagnostic tools combined with our dealer expertise ensure that downtime is minimised by means of advance planning. AgCommand™ telemetry allows you to monitor your tractor and the tasks it is performing at any time. Predictive maintenance, fault reports and work performance reports can also be managed with AgCommand. This allows you to influence directly the performance of your drivers and tractors.

AUTO-GUIDE 3000

Auto-Guide 3000™ is AGCO's automatic steering system that is already used on thousands of tractors. The advanced system helps save time, fuel and material while reducing variations in performance among drivers.

All S Series tractors are compatible with AgCommand and Auto-Guide 3000, and they can be fitted already at the factory.

ONE SYSTEM FOR YOUR ENTIRE FARM AND ALL YOUR MACHINERY

The AgCommand telemetry system is a key part of AGCO's FUSE strategy. Key data about all the machinery on your farm, including engine data, location and operating hours, can be accessed almost in real time from your computer or smart phone. This makes it easier to plan the logistics of large farms and to monitor work performance. In addition, detailed service information can be sent to your local dealer, who can then anticipate servicing needs and reserve time to ensure the optimal performance of your machinery.

FUSE
TECHNOLOGIES





A GLOBAL SERVICE NETWORK AT YOUR SERVICE

It is extremely important for us at Valtra that your tractor remains reliable and in good working condition year after year. In addition, as part of the world's largest agricultural machinery manufacturer AGCO, we can offer services that help you manage the entire production chain and maximise the output and results of your work.



YOUR OWN VALTRA DEALER

Each Valtra dealer represents the best tractor and implement expertise in the world. They understand both the technical aspects of your tractor and the challenges you encounter in your everyday work. You can always turn to your own dealer and receive the best service, whether you are interested in additional services or equipment, maintenance, spare parts, selling your own tractor or ordering a new one. Each Valtra dealer is an independent entrepreneur just like you who works continuously to develop both his own operations and those of his customers. AGCO audits its dealer representatives each year to ensure that you get the best possible service.

FLEXIBLE FINANCING SOLUTIONS

AGCO Finance is a fast and safe option for financing the purchase of your next tractor. Financing is tailored individually based on your cash flow and operations. We offer flexible payment methods according to your needs, and we take seasonal variations into consideration when planning payment schedules.

VALTRA PREMIUMCARE

Valtra PremiumCare allows you to anticipate flexibly the maintenance costs of your investment so that you can better manage your production costs. Regular maintenance and a full service history help maximise the resale value of your tractor. Valtra PremiumCare also lets you minimise the lifecycle costs of your tractor. With Valtra PremiumCare you can standardise your maintenance costs all the way up to 10,000 operating hours. In addition, Valtra PremiumCare includes a five-year or 6000-hour extended factory warranty. Valtra PremiumCare is available with all Valtra models.

SPARE PARTS EVEN ON THE NEXT DAY

Valtra's comprehensive spare parts service supplies the parts you need as fast as by the next morning. This helps you keep your tractor productive in the midst of the busy ploughing and harvesting seasons. The AGCO Parts label ensures that you are getting original Valtra spare parts that have been thoroughly inspected and tested.





PROFESSIONAL MAINTENANCE SERVICES

As a Valtra owner you have access to the Valtra service network. Our skilled technicians are experts in all Valtra tractor models, including the newest technologies and the latest features. Even if you do not opt for Valtra PremiumCare, having your tractor service regularly by Valtra-approved technicians ensures that your tractor will continue to perform well even during the busiest seasons. In addition, the resale value of your tractor will remain high.

MY VALTRA

When you purchase a Valtra S Series tractor, you become part of a global online community that we call My Valtra. Here you can ask for advice, share working life, send photos and videos, and relate your experiences among other Valtra owners in over 50 countries around the world.
www.myvaltra.com

REMANUFACTURED ENGINES AND TRANSMISSIONS

If the engine or transmission in your tractor comes to the end of its working life, you can order remanufactured parts directly from Valtra. At the factory we disassemble your old engine or transmission, replace damaged or worn out parts with new ones, calibrate the components and offer a factory warranty on our work.

VALTRA TEAM

Valtra Team is our customer magazine which is published twice a year. Each issue contains useful information about the latest innovations, including the newest and most efficient work methods. You can also access the magazine's archives on the internet and read the articles that interest you most dating back to 2000.

AGCO ACADEMY

Tractors and related technologies, especially precision farming technologies, are developing at a rapid pace. The AGCO Academy continuously trains Valtra dealers and service technicians. In this way you can be sure that you always receive first-class and up-to-date expertise from your Valtra dealer and service technicians.

VALTRA COLLECTION

The Valtra Collection offers high-quality clothing and accessories for work and leisure. The materials and details are carefully selected according to the type of clothing. For example, the newest collection of work clothes features light yet extremely durable materials. Style has not been overlooked, as the clothing reflects Valtra's modern design language.



KEY ACCOUNT PROGRAMME

Some of the world's most successful professional farmers are feeding the world with AGCO equipment. Join us, and add your name to a growing group of dedicated, forward-thinking and profitable farmers. With your help, we can change the face of farming. Together, we can meet the challenges ahead and increase productivity in a sustainable, profitable way.

AGCO IS THE LARGEST FULL-LINE EQUIPMENT MANUFACTURER FOCUSED EXCLUSIVELY ON AGRICULTURE

We are one of the world's most influential producers of farm machinery – a leader in product development, a leader in technology and a leader in customer service.

WE KNOW AGRICULTURE

AGCO is the world's largest manufacturer focused purely on agriculture. Our high-tech solutions and vast experience of global agriculture mean AGCO is uniquely placed to increase your farm's productivity.

WE SUPPORT YOUR FARM

AGCO meets individual farming needs. From the most demanding challenges to everyday tasks, our multiple brands and customer-focused services enable us to give you exactly what you need, when you need it.

WE HELP FEED THE WORLD

AGCO's global presence ensures that professional farmers worldwide have the tools they need to maximise their crop yield and meet growing demands.



TRACTOR MODEL	S274	S294	S324	S354	S374
ENGINE					
Max. hp @ 2000 rpm, hp (kW)	270 (199)	295 (217)	320 (236)	350 (258)	370 (272)
Max. hp @ 2000 rpm, with boost, hp (kW)	290 (213)	315 (232)	350 (258)	370 (272)	400 (294)
Max. torque @ 1500 rpm, Nm	1220	1300	1390	1530	1540
Max. torque @ 1500 rpm, with boost, Nm	1300	1390	1500	1590	1600
Emission control	Tier 4f/Stage 4	Tier 4f/Stage 4	Tier 4f/Stage 4	Tier 4f/Stage 4	Tier 4f/Stage 4
AGCO POWER engine	84 AWF	84 AWF	84 AWF	84 AWF	84 AWF
Volume, litres / Number of cylinder	8.4 / 6	8.4 / 6	8.4 / 6	8.4 / 6	8.4 / 6
TRANSMISSION					
Work area A (Field)	0.03-28 km/h forward, 0.03-16 km/h reverse				
Work area B (Transport)	0.03-50 km/h forward, 0.03-38 km/h reverse				
Operation modes	Automatic and manual				
POWER TAKE-OFF (REAR)					
2 Speeds, 540E +1000 or 1000E + 1000					
1000 rpm @ engine rpm	2030	2030	2030	2030	2030
540E or 1000E rpm @ engine rpm	1600	1600	1600	1600	1600
Exchangeable PTO shaft	YES	YES	YES	YES	YES
FRONT LINKAGE					
Integrated, Standard equipment					
Lift capacity, kg	5000	5000	5000	5000	5000
Front PTO	Option	Option	Option	Option	Option
REAR LINKAGE					
Autocontrol, Drive balance control and slip control					
Lift capacity, kg	12000	12000	12000	12000	12000
Lower links	Cat 3 or 4				
HYDRAULICS					
Closed centre load sensing (CCLS)					
Max. pump output, l /min	205	205	205	205	205
Hydraulic oil	Separate, max. 51 litres available for implements				
Work hydraulics, front	Up to 2 electronic spool valves, Joystick controls				
Work hydraulics, rear	4 or 6 electronic spool valves, 4 fingertip and 2 joystick controls				

TRACTOR MODEL	S274	S294	S324	S354	S374
Hydraulic couplers, rear	"Decompression" couplers with connect/disconnect under pressure function				
Steering	Hydrostatic, tilt/telescopic steering column				
QuickSteer	standard	standard	standard	standard	standard
BRAKES	Oil cooled, multi-plate discs, hydraulic actuation with power assistance				
Parking brake	Integrated with shuttle lever, hydraulic				
4WD FRONT AXLE					
Type	STD	STD	HD	HD	HD
Max steering angle	55°				
Suspension	Hydropneumatic				
CAPACITIES					
Fuel tank, litre	630	630	630	630	630
AdBlue tank, litre	60	60	60	60	60
DIMENSIONS (TYRES FRONT, REAR)	600/70R28, 650/85R38	600/70R28, 650/85R38	620/65R34 710/75R42	620/65R34 710/75R42	620/65R34 710/75R42
Weight at no load (with full tank, without additional weights), kg	10300 (12000)	10300 (12000)	10300 (12000)	10300 (12000)	10300 (12000)
Wheebase, mm	3105	3105	3105	3105	3105
Length, mm	4868	4868	4868	4868	4868
Height to roof mm with 710/85R38 tyres	3382	3382	3382	3382	3382
Minimum external width, mm	2550	2550	2550	2550	2550
Ground clearance, mm	472	472	472	472	472
Turning radius with brakes / without brakes, m	7.4/8.4	7.4/8.4	7.4/8.4	7.4/8.4	7.4/8.4
CAB					
Suspension	4-post with 4 -point pneumatic suspension (AutoComfort)				
Standard equipment	De-luxe "flat floor" cab, opening rear window, air conditioning, four speed fan with heater unit, adjustable steering column, Valtra Evolution seat, ISOBUS ready, Auto-Guide ready (automatic steering), AgCommand ready (telemetry fleet management and diagnostics), 6 working lights at rear and 4+2 in front, Valtra ARM with terminal.				
Optional equipments	TwinTrac reverse-drive system, automatic air conditioning, Xenon work lights, foot heater, ISOBUS terminal, Auto-Guide 3000				



VALTRA

Valtra Inc.
Valmetinkatu 2
FI-44200 Suolahti

Tel. +353 (0)2045 501
Fax +353 (0)2045 50608
www.valtra.com

 facebook.com/ValtraGlobal
 youtube.com/ValtraVideos

**YOUR
WORKING
MACHINE**