



# Work lamps Catalogue



MODUL 70 H3



ULTRA BEAM H3



POWER BEAM 1000



OVAL 100  
X-POWERPACK

Partner of your growth



ORIGINAL  
PARTS





Tractor equipped with  
2 Module 70 H3 work lamps



pn 73326781



# MODUL 70 H3

## Round halogen work lamp

**Features** Full sealed to withstand high pressure washing and dust infiltrations according to DIN 40050 / IP5K9K norms.

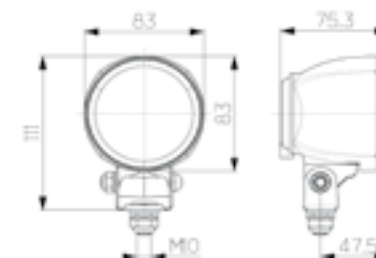
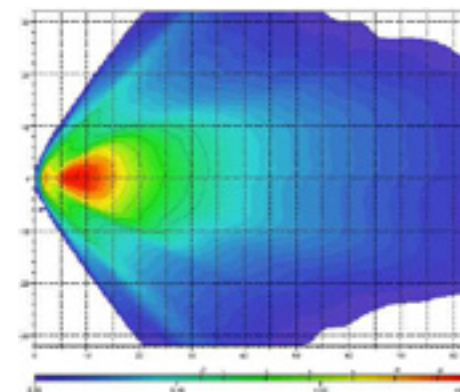
- Standard Worklamp with homogenous close range light distribution.
- Compact and modern design.
- Clear glass lens in combination with latest reflector technology.
- Swivel mounting.

## Technical details

Operating voltage	Power consumption	Bulb	Connection	Illumination
12 V	55 W	H3	300 mm harness + Deutsch plug included	Close range
Light output				
1 100 lm				

## Optional harness

Deutsch connector and 2 000 mm wire. pn 73326807



**CNH**

ORIGINAL  
PARTS

Partner of your growth



Tractor equipped with  
2 Ultra Beam H3 work lamps



pn 73326778



# ULTRA BEAM H3

## Square halogen work lamp

**Features** Full sealed to withstand high pressure washing  
and dust infiltrations according to DIN 40050 / IP5K9K norms.

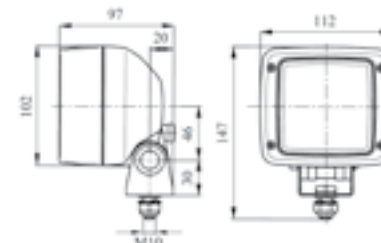
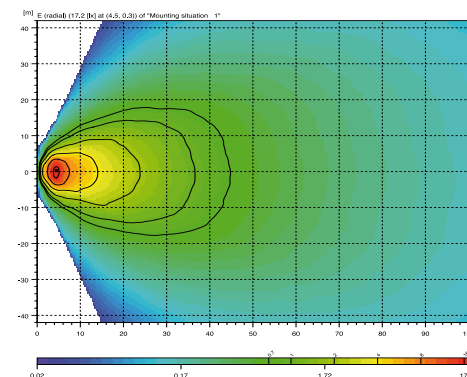
- Standard Worklamp with homogenous close range light distribution.
- Compact and modern design.
- Clear glass lens in combination with latest reflector technology.
- 4 point mounting bracket.

## Technical details

Operating voltage	Power consumption	Bulb	Connection	Illumination
12 V	55 W	H3	300 mm harness + Deutsch plug included	Close range
<b>Light output</b>				
1 100 lm				

## Optional harness

Deutsch connector and 2 000 mm wire. pn 73326807





Tractor equipped with  
2 Power Beam 1000 work lamps



pn 73326779



# POWER BEAM 1000

## LED work lamp

### Features

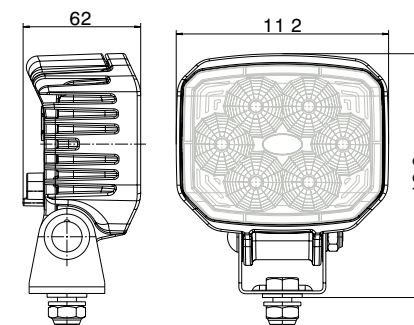
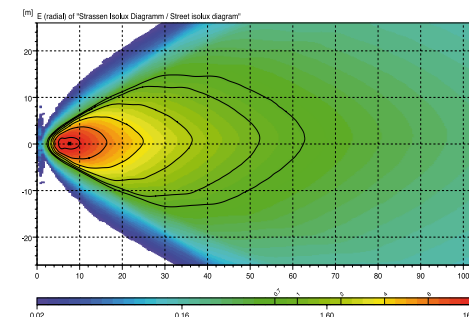
- 6 highpower LED's for a great visual comfort.
- Lifespan up to 2 500 hours 130 times of a halogen bulb.
- Low power consumption (18W only).
- Homogenous close range illumination.
- Sealed - IP6K7 and IP6K9K.
- Fulfills EMC-class 5 according CISPR25 (highest EMC class) - no disturbance of radios or other electronic devices.
- With die-cast housing, plastic cover on the rear side and stainless steel bracket.
- DC/DC converter electronic.
- Polarity protected.
- LED fail bridge.
- High temperature protection.

### Technical details

Operating voltage	Power consumption	Light output	Colour temperature	Operating temp.
Multivolt 9-33 V	18 W	850 lm / 1000 clm	6 500 K	-40 to + 50°C
Connection	Accessory	Illumination		
Integrated DT plug	300 mm harness + Deutsch plug included	Close range		

### Optional harness

Deutsch connector and 2 000 mm wire. pn 73326807



**CNH**

ORIGINAL  
PARTS

Partner of your growth





Tractor equipped with  
2 Oval 100 X-Powerpack work lamps



pn 73326780



# OVAL 100 X-POWERPACK

## Xenon HID work lamp

### Features

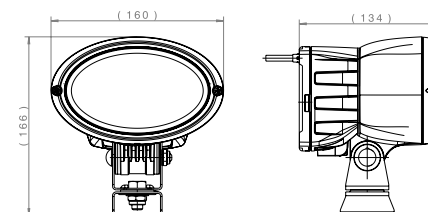
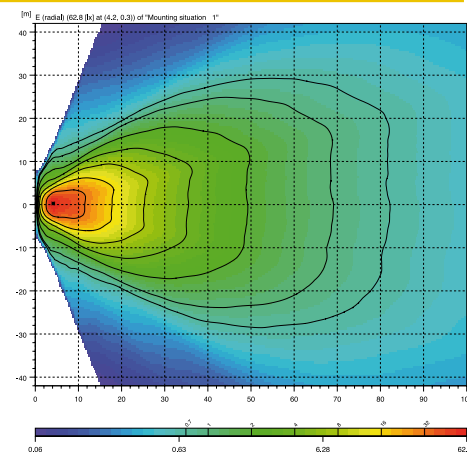
- A light beam 2.5 times wider than a regular H3 work lamp.
- Lifespan 10 times of a halogen bulb.
- Standard Worklamp with homogenous close range light distribution.
- Clear glass lens in combination with latest reflector technology.
- Compact and modern design.
- 4 point mounting bracket.
- Integrated ballast unit.
- Water proof IP67 and IP6K9K.

### Technical details

Operating voltage	Power consumption	Bulb	Connection	Illumination
12 V	42 W	D1S	500 mm harness + Deutsch plug included	Close range
<b>Light output</b>				
2 700 lm				

### Optional harness

Deutsch connector and 2 000 mm wire. pn 73326807





## CNH ORIGINAL LIGHTING DEVICES

- We offer a wide range of high quality work lamps, beacons, headlamps, tail lamps, and bulbs specially designed for your machine.
- All original New Holland lighting devices are engineered to preserve the original lighting performance of your machine.
- They are approved to fulfill legal requirements for road and/or field use.
- Our lighting devices are engineered to provide you comfort at work : just fit and forget about them.

### Maintenance tips

For your New Holland machine to be reliable, productive and safe :

- Avoid cleaning the work lamps with liquid while the lamp is still working or the lens is still hot.
- Keep flammable materials at least 1 meter away from the lighting device.
- To avoid eyes injury do not ever watch the light beam directly in front.

